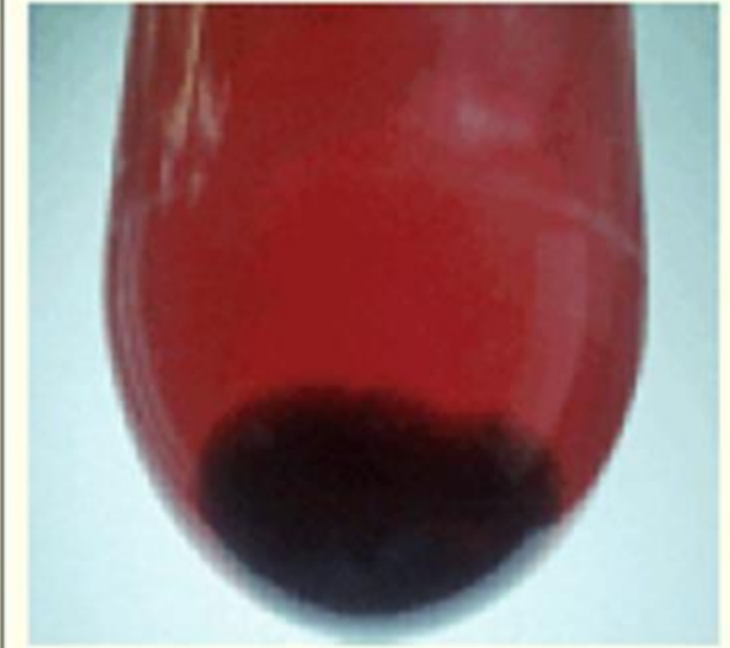
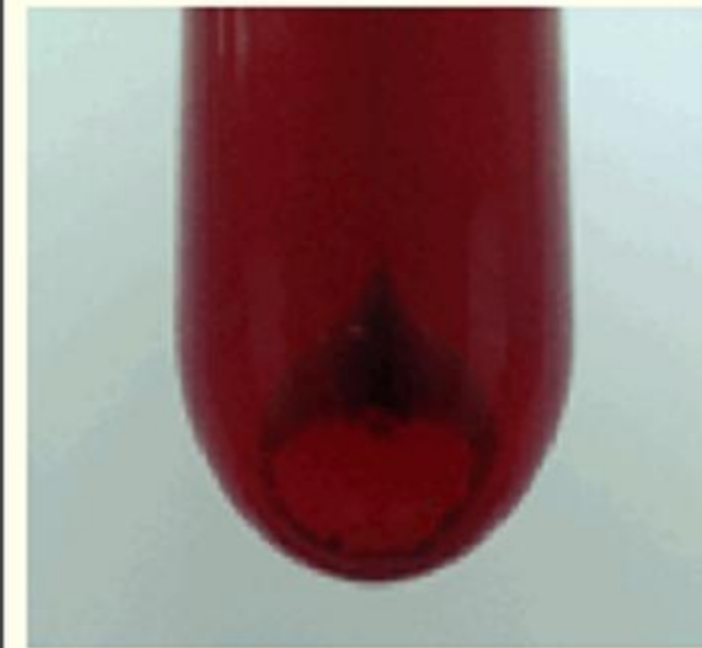
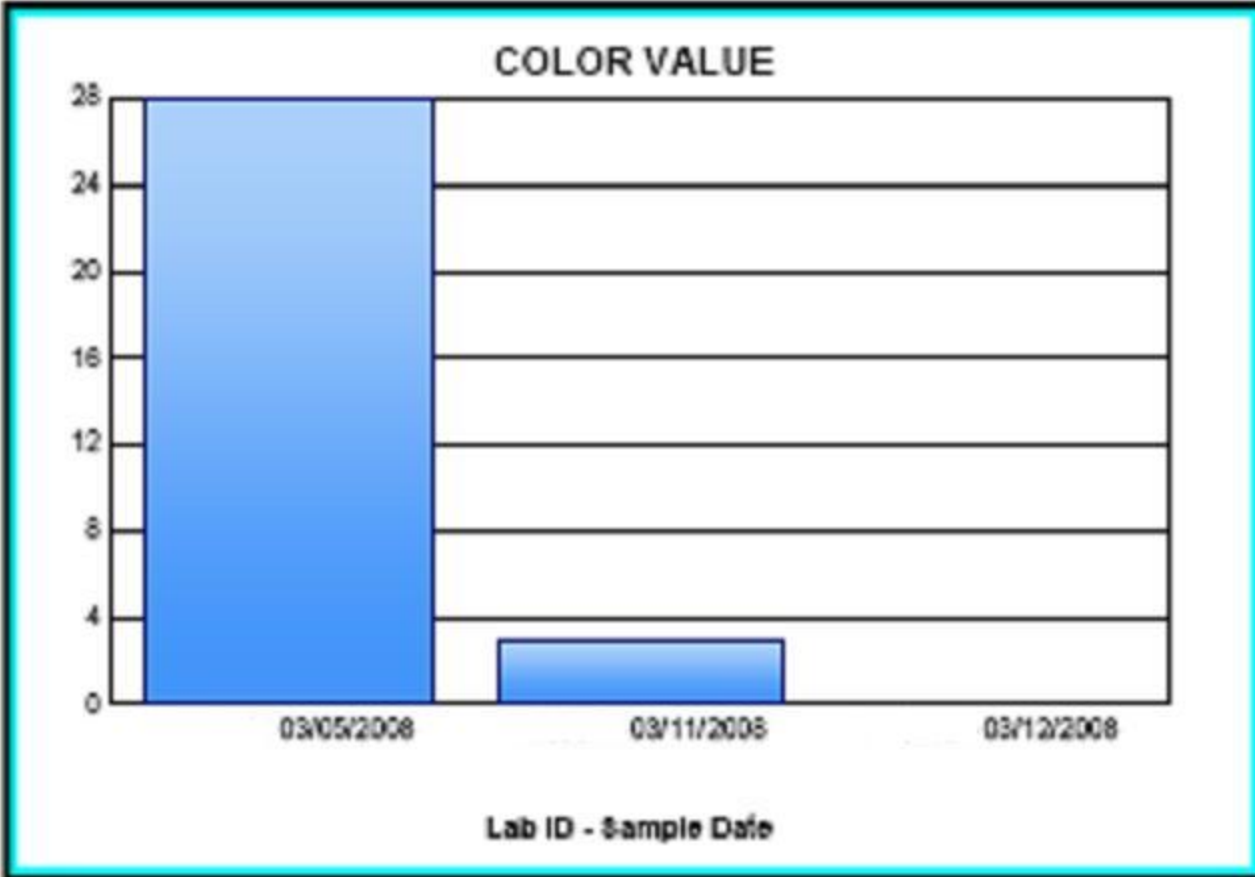
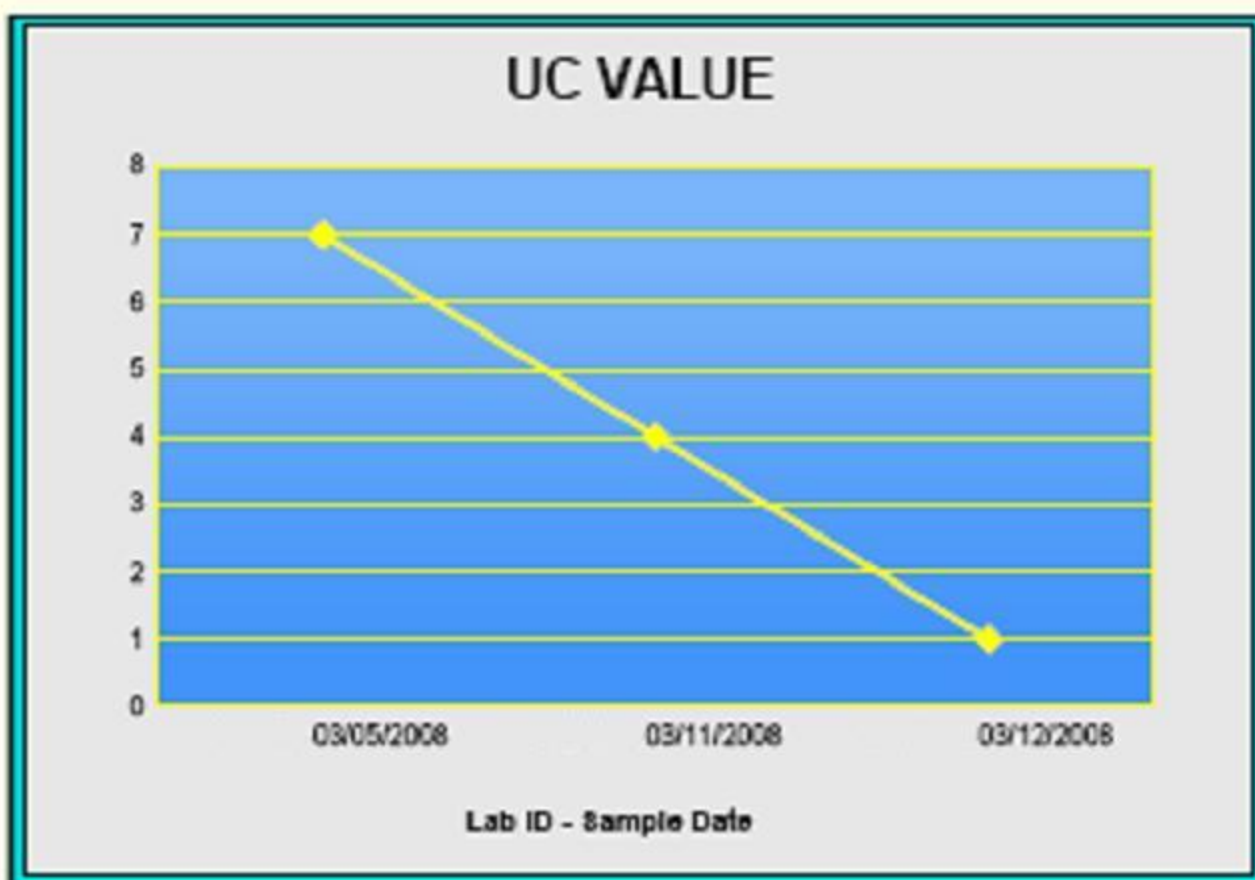


VARNISHING POTENTIAL ANALYSIS

Lube Type: SHELL TURBO 32	Received: 3/31/08	Accelerated Test
Machine MFG: GENERAL ELECTRIC	Report: 4/14/08	
Machine MOD: GE 7001EA		
Machine Type: Industrial Turbine		

Observations/Recommendations

The current test results indicate a low level of degradation by-products associated with varnishing. Please continue routine sampling to monitor the trend in the level.



30 hours of filtration in accelerated test

4.5 hours of filtration in accelerated test

Start of accelerated test, after 9 months filtration

Initial condition of turbine prior to filtration

Sample Date	03/12/2008	03/11/2008	03/05/2008	01/22/2007
ULTRA CENTRIFUGE TEST				
UC Value	1	4	7	8
MICROSCOPIC PARTICLE COUNT				
Particles .2-1	159	130	24,500	1,000,000
Particles 1-2	58	86	8,570	233,000
Particles 2-5	43	72	1,220	22,500
COLORMETRIC ANALYSIS				
Color Value (M/C/Y/B) T	(0/0/0/0)0	(0/2/1/0)3	(7/8/13/0)28	(47/44/61/14)166
PHYSICAL PROPERTIES	REFERENCE			
Acid Number	-	0.010	0.020	0.060
Karl Fischer Water	0	0.000	0.000	0.005
Oxidation	2	1	1	2
Nitration	2	3	3	2