



CLEAN OIL
BRIGHT IDEAS

Gear Flushing Unit, GFU

CJC™ Oil Filtration & Flushing System for Wind Turbine Gearboxes

CJC™ Product Sheet

APPLICATION

The **CJC™ Gear Flushing Unit, GFU** is designed for fast and efficient flushing of new or refurbished gear boxes. It maintains the oil contamination level low during the flushing process and reduces this period to a minimum. Furthermore, the **CJC™ Gear Flushing Unit, GFU** has an integrated and fully automatic logging system that documents the gear cleanliness during the entire flushing process.

BENEFITS

The **CJC™ Gear Flushing Unit, GFU** enables real time documentation of the entire gearbox flushing procedure. The flushing capacity of the **CJC™ Gear Flushing Unit, GFU** gives the shortest flushing time possible at highest possible efficiency. This allows for the optimum production output on the market. By using the patented **CJC™ Gear Filter insert, GFi** with the extremely high dirt holding capacity, users will benefit from the lowest possible running cost on the market and long mean time intervals between service.

FEATURES

- Built-in CJC™ Oil Contamination Monitor, OCM for monitoring and logging of oil cleanliness
- Plug and play Flushing procedure securing, that only clean oil can access the gearbox
- Stop and Go of pumps when performing service intervals does not compromise oil cleanliness
- Flushing time reduced to a minimum
- Mean time between necessary service intervals prolonged
- World's best contaminant holding capacity

FUNCTION

The **CJC™ Gear Flushing Unit, GFU** has an automatic flushing process feature, which saves time. Type in gear oil volume and desired oil cleanliness, push START and the gear flushing process will run fully automatically:

- Filling the gear box
- Cleaning the oil during the flushing process
- Documenting the result
- Emptying the gearbox
- Cleaning day tank

The unit is available in two configurations depending on the specific need for capacity. The unit designed for maximum capacity consists of an offline filter system with 4 parallel connected HDU 27/108 stays built on to the flushing system. Designed for medium capacity the unit consists of 1 HDU 27/108 stay. The 1x27/108 model is both more compact and mobile than the 4x27/108 unit. Both units are operated in identical ways. The built in Oil Contamination Monitor, OCM makes it possible to do monitoring and logging of the oil cleanliness during the whole gear flushing process.

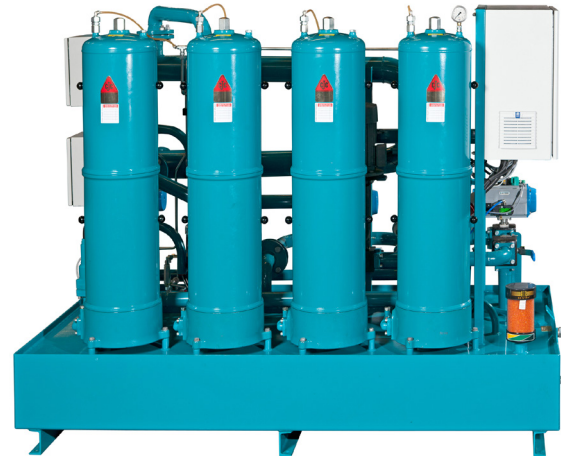
THE FILTER / FLUSHING PUMP

The filter/flushing pump is a low noise non pulsation and long life positive displacement screw pump, especially designed for handling high viscosity gear oil.

OPTIONS

Remote Control Feature:

As an option the **CJC™ Gear Flushing Unit, GFU** is available with integrated router allowing for remote control.



*Gear Flushing Unit, GFU
The CJC™ Fine Filter HDU 4x27/108*

TECHNICAL DATA

Gear Flushing Unit		1 x 27/108	4 x 27/108
Pump flow, max.	ltr/gal	1700 / 450	7000 / 1850
Pump type		Low noise screw pump	
Pump inlet pressure, max.	bar/psi	1.5 / 22	0.5 / 7
Gear Flushing insert, GFi	pcs.	4	16
Power consumption, aver.	kW	5	39
Preheater power	kW	1 x 4.4	2 x 9
Pressure drop, max.	bar/psi	3.5 / 51	1.8 / 26
Oil temperature, max.	°C / °F	80 / 176	
Dry weight	kg/lb	300 / 661	1500 / 3308
Design pressure	bar/psi	4 / 58	
Ambient temp. max	°C / °F	60 / 140	40 / 104

APPLICABLE FILTER INSERTS

Type	Application for
GFi	Gear oils at high flow rates with air bubbles



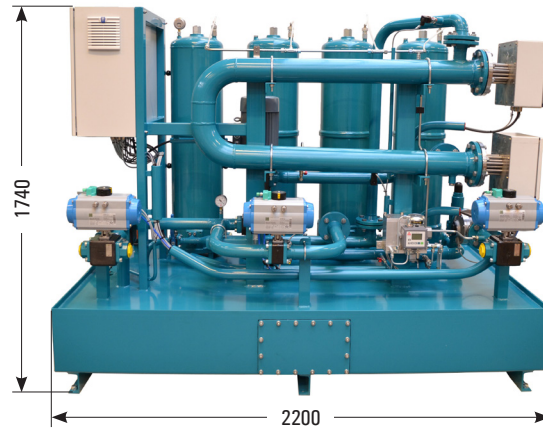
CLEAN OIL
BRIGHT IDEAS

Gear Flushing Unit, GFU

CJC™ Oil Filtration & Flushing System for Wind Turbine Gearboxes

CJC™ Product Sheet

DIMENSIONS



CJC™ Gear Flushing Unit, HDU 4x27/108
Measurements in mm

INSTALLATION PRINCIPLE

