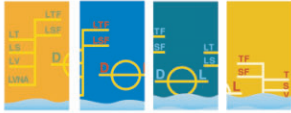




OIL FILTRATION SYSTEMS

# CJC™ Application Study

## Gear Oil - Work Boat, Reduction Gear



MARINE

*Application Study  
written by:  
Kim Kjær  
C.C.Jensen A/S  
Denmark*

2000

### CUSTOMER

**Sand-pumping dredger:**  
"M/S Viking-R".

**Owned by:**  
Rohde Nielsen, Danmark.

### THE SYSTEM

Reintje reduction gearboxes, port and starboard. ELF XC 30 gear oil.

### THE SOLUTION

**CJC™ FineFilter HDU 15/25 PM** and 1 off **CJC™ FilterInsert B 15/25 Element** with a filtration ratio of 3 µm (micron) absolute.

### THE TEST

M/S Viking is equipped with two identical Reintje gears. One CJC™ FineFilter HDU 15/25 PM was installed on the starboard gear. Both port and starboard gears were then in operation for 10,000 hours before oil samples were taken from each gear.

### THE RESULT

The remarkable result of this test is that the intensive particulate contamination clearly visible on the port gear membrane, cannot be found on the starboard gear membrane. Evidently, the CJC™ FineFilter has removed the metal and paint particles and oxidation residuals, thus reducing the wear and tear of the gearbox bearings and wheels.

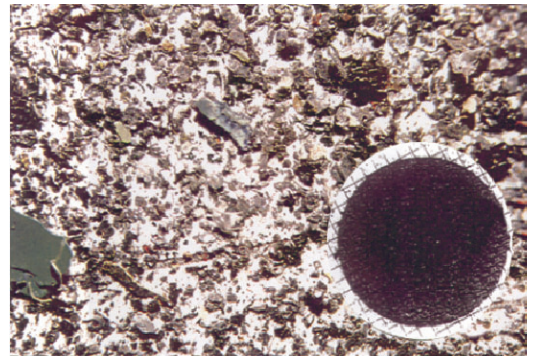
### THE RESULT IS:

**Firstly:** Extension of the oil and system component lifetime.

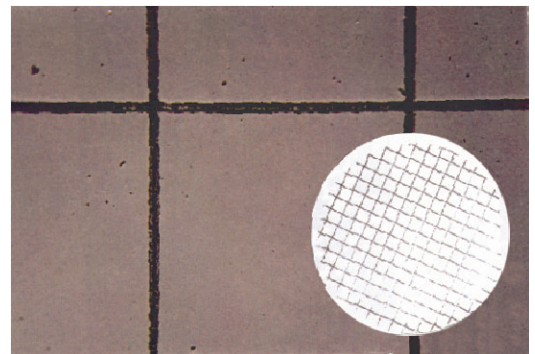
**Secondly:** Improvement of the operational reliability, which dramatically reduces the risk of unplanned system downtime.



*CJC™ Fine Filter HDU 15/25 PM.*



*Oil sample from port side reduction gear  
- without CJC™ filter.*



*Oil sample from starboard side reduction gear  
- with CJC™ filter.*

